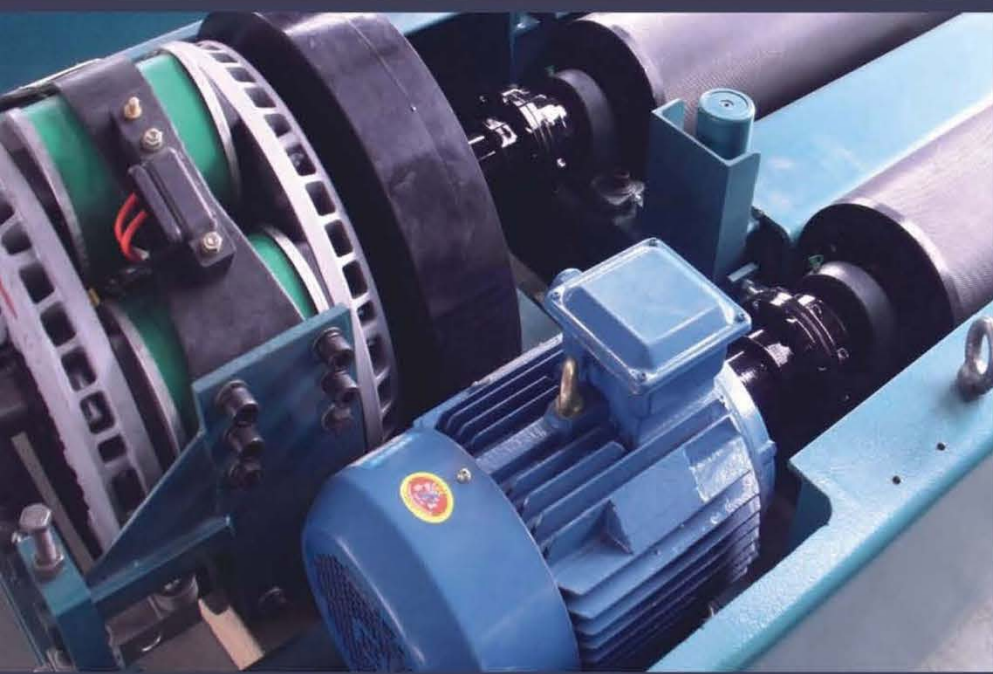




风冷式电涡流机、测功机 Eddy Current Machine Dynamometer



广州科奥缓速器有限公司
GUANGZHOU KEAO RETARDER CO., LTD

企业简介 Introduction

广州科奥缓速器有限公司坐落在风光秀丽的珠江河畔，与广州大学城隔江相望，水陆交通十分便利。公司占地面积三万余平方米，厂房建筑面积一万平方米，拥有固定资产五千多万元，先进生产设备 300 多台套。

广州科奥缓速器有限公司是我国最早研发、生产、销售电涡流缓速器的民营高科技企业之一。

公司引进国外先进技术，结合国内车辆性能和道路特点研制而成的科奥牌系列电涡流缓速器，产品设计合理、扭力大、性能稳定，拥有自主知识产权和国家专利，设计水平和生产工艺处于国内领先地位。

科奥牌电涡流缓速器通过国家机动车质量监督检验中心检测试验，与慕齿、东风、杭齿、哈齿、一汽、大同、韩国大宇等变速箱和一汽、东风、湘桥、湖桥等车桥匹配，并与宇通、金龙、安凯、五十铃、中通、北汽福田、川江等国内知名客车厂配套供货。

公司通过了 TS16949 欧洲电子汽车行业质量认证及 ISO9001 等质量认证，建立了遍及全国的售后服务网点，以快速、高效、真诚的服务回馈用户对科奥产品的信任。



Keao(Keao Electrical & Mechanical Co.,Ltd) is located in the beautiful riverside of Pearl River opposite Guangzhou City, The total production area covers 60.000 M2. We enjoy a very convenient land and waterway transportation. KEAO is a privately-run high-tech corporation.

From 2003, keao bend itself to safer and easier transportation. Our 3 series and near 18 types of electromagnetic retarder products are applicable for public , tourism buses and trucks. Moreover, we are capable for development. KEAO has been granted the quality system certificate of ISO9001: 2000、ISO/TS16949:2002.

In 2005, KEAO has covered the glory of "The best supplier of yutong bus", "best parter of qingjiang gearbox co., ltd" , in 2007 , KEAO retarder tie in ZF Gearboxes (ZF S6-85 , ZF S6-86, ZF S6-90 ect) and HINO Gearboxes. by now The annual production capacity of our company is 200,000 sets.

We are now boasting of scientific management, strong technical background and fine artwork equipment. We adhere to the principles of "depending on technology, progressing under Olympic flag, dealing by credibility, customer being our parter". KEAO is always preparing to satisfy customers with product of high quality and pollution-free and good service.



风冷式电涡流机简介 Air-cooled eddy current machine

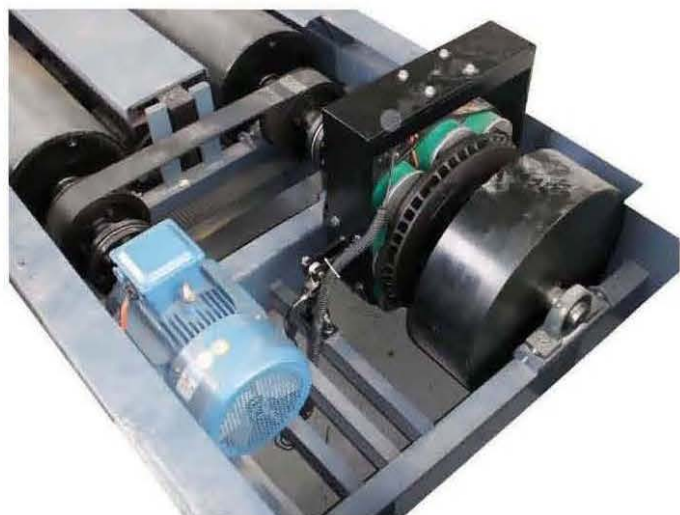
风冷式电涡流机主要由定子、转子、电磁线圈、铁芯、导磁板等几个基本部分组成。它是根据运动中的导磁体切割磁力线时产生电涡流形成阻力矩的电磁原理来工作的，即线圈通电产生磁场，同时转子在该磁场中转动产生强大的涡电流，涡电流再将电能转化成热能，通过转子冷却风道散发到空气中，此时定子与转子之间就会产生没有任何摩擦的阻力矩。

KAS系列风冷式电涡流机是根据国内汽车检测测试设备配套需要而研制开发的，其主要应用在摩托车底盘测功机，汽车底盘测功机，排放加载设备，汽车教学试验台以及演示仪器中作为加载及测量扭矩用。近年来，亦大批量用在重型汽车（客货车）上作为汽车制动辅助装置，该产品以其安全、经济、环保、舒适等优点，受到越来越多用户的欢迎和青睐。



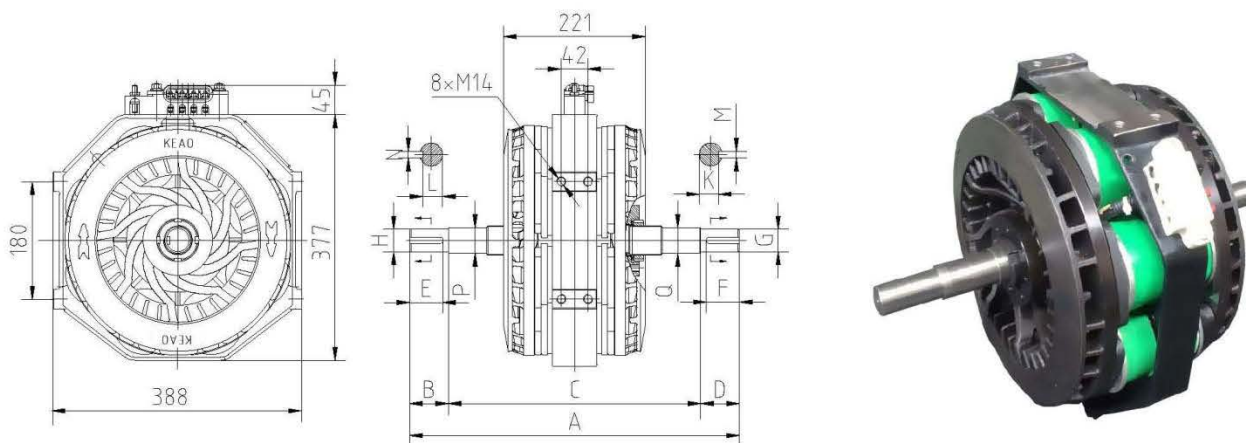
KAS Air-cooled eddy current machine mainly by the stator, rotor, electromagnetic coils, and both sides of the electromagnet, and several other essential components. It is based on the movement of the guide magnetic field lines generated when cutting the formation of eddy current electromagnetic resistance moment theory to work, that is, when the electromagnetic field generated after CRC into the current, while the rotor rotates, the rotor will have a strong electrical eddy current, eddy-current electrical energy and then converted into heat energy, emitted by the rotor cooling fan room, this time arises between the stator and rotor without any friction resistance.

KAS Series air-cooled eddy current machine is based on the domestic automobile testing test equipment supporting the needs of research and development, and its main



application in the motorcycle chassis dynamometer, chassis dynamometer, emissions loading equipment, motor vehicles, as well as teaching test-bed demonstration instrument used as a load and torque measurement. Also large quantities used in heavy-duty vehicles (vans) on a vehicle with Brake Assist, the product of its security, economy, environmental protection, comfort and other advantages, more and more users are welcome and favor.

Picture And/Or Part Number of OEM's are for reference purpose only.



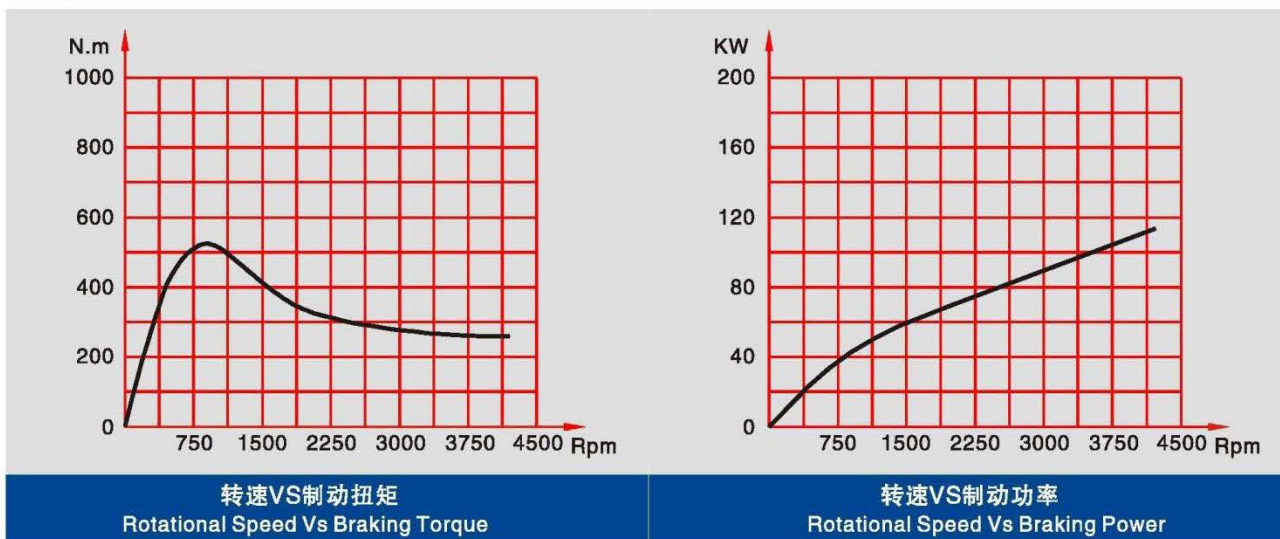
KAS05系列电涡流机尺寸规格 KAS05 series eddy current machine out and assembly dimensions

| 科奥号 Keao No. | 尺寸(mm) Dimensions | | | | | | | | | | | | |
|-----------------|-------------------|----|-----|----|----|----|-----|-----|----|----|----|----|-----|
| | A | B | C | D | E | F | G | H | K | L | M | N | P/Q |
| KAS05-00 | 514 | 60 | 394 | 60 | 60 | 60 | Φ35 | Φ35 | 30 | 30 | 10 | 10 | Φ40 |
| KAS05A-00 | 514 | 66 | 382 | 66 | 66 | 66 | Φ35 | Φ35 | 30 | 30 | 10 | 10 | Φ40 |

注意事项 attention:

- 1、单边轴外伸部分不得长于410mm,轴总长不得大920mm。(Unilateral shaft extension dimensions less that 410mm, total length of the shaft less than 920mm.)
- 2、单边轴外伸直径P、Q值不能大于 φ42mm。(Shaft extension diameter P/Q less that 42mm.)
- 3、尺寸可根据顾客定制。(Dimensions can according to customer requirements.)

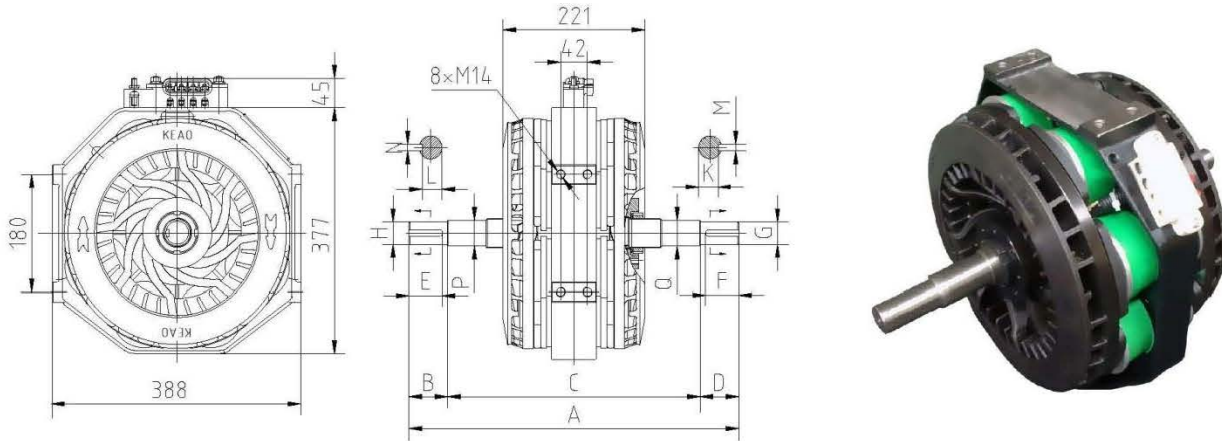
KAS05系列电涡流机曲线图/ KAS05 series eddy current machine characteristics curves



KAS05系列电涡流机技术参数 KAS05 series eddy current machine technical parameter

| | |
|--------------------------------|------------------------|
| 最大扭矩 Max. transmissible torque | 500 N.m |
| 最大转速Max. rotational speed | 4300 r.p.m |
| 额定功率 Rated power | 85 KW |
| 额定电压 Rated voltage | DC 192V |
| 总电流 Total current | 6.5 A |
| 转子平衡等级Rotors balance grade | 6.3G |
| 转子转动惯量Rotors inertia | 1.23 Kg.m ² |
| 总重量 Total weight | 88Kg |

Picture And/Or Part Number of OEM's are for reference purpose only.



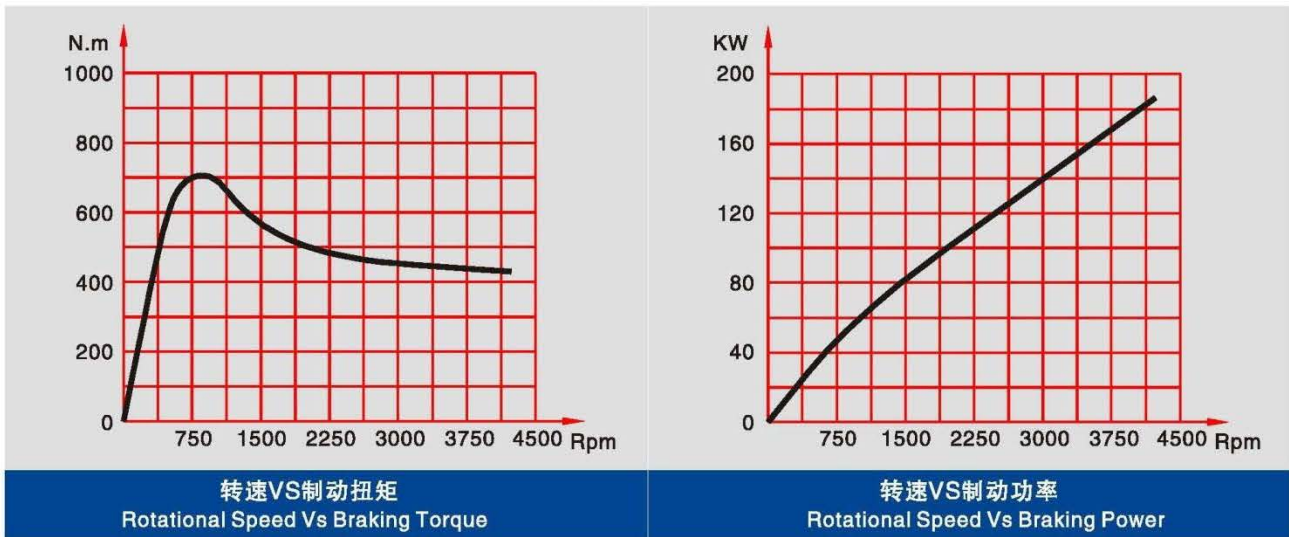
KAS07系列电涡流机尺寸规格 KAS07 series eddy current machine out and assembly dimensions

| 科奥号 Keao No. | 尺寸(mm) Dimensions | | | | | | | | | | | | |
|-----------------|-------------------|----|-----|----|----|----|-----|-----|----|----|----|----|-----|
| | A | B | C | D | E | F | G | H | K | L | M | N | P/Q |
| KAS07-00 | 514 | 60 | 394 | 60 | 60 | 60 | Φ35 | Φ35 | 30 | 30 | 10 | 10 | Φ40 |
| KAS07A-00 | 514 | 66 | 382 | 66 | 66 | 66 | Φ35 | Φ35 | 30 | 30 | 10 | 10 | Φ40 |

注意事项 attention:

- 1、单边轴外伸部分不得长于410mm,轴总长不得大920mm。(Unilateral shaft extension dimensions less that 410mm, total length of the shaft less than 920mm.)
- 2、单边轴外伸直径P、Q值不能大于 $\phi 42$ mm。(Shaft extension diameter P/Q less that 42mm.)
- 3、尺寸可根据顾客定制。(Dimensions can according to customer requirements.)

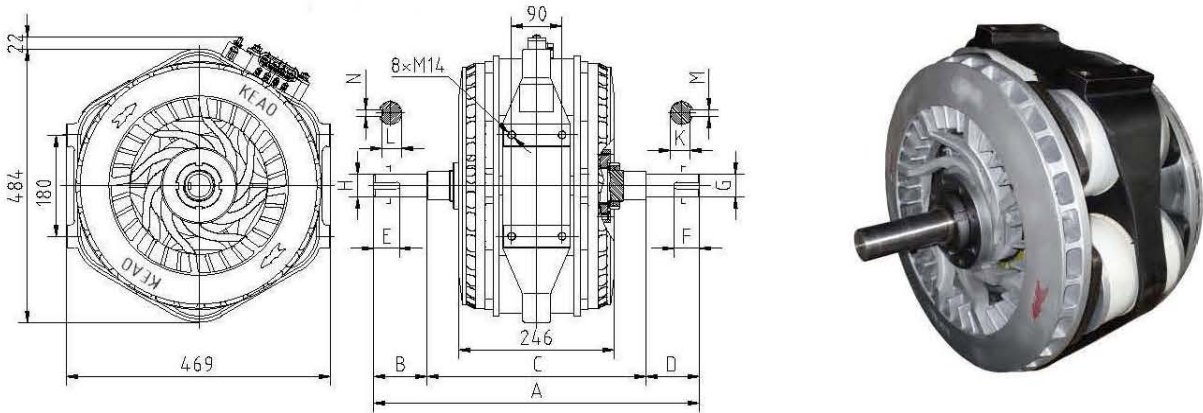
KAS07系列电涡流机曲线图/ KAS07 series eddy current machine characteristics curves



KAS07系列电涡流机技术参数 KAS07 series eddy current machine technical parameter

| | |
|--------------------------------|------------------------|
| 最大扭矩 Max. transmissible torque | 700 N.m |
| 最大转速Max. rotational speed | 4300 r.p.m |
| 额定功率 Rated power | 120KW |
| 额定电压 Rated voltage | DC 192V |
| 总电流 Total current | 7.3 A |
| 转子平衡等级Rotors balance grade | 6.3G |
| 转子转动惯量Rotors inertia | 1.23 Kg.m ² |
| 总重量 Total weight | 98Kg |

Picture And/Or Part Number of OEM's are for reference purpose only.

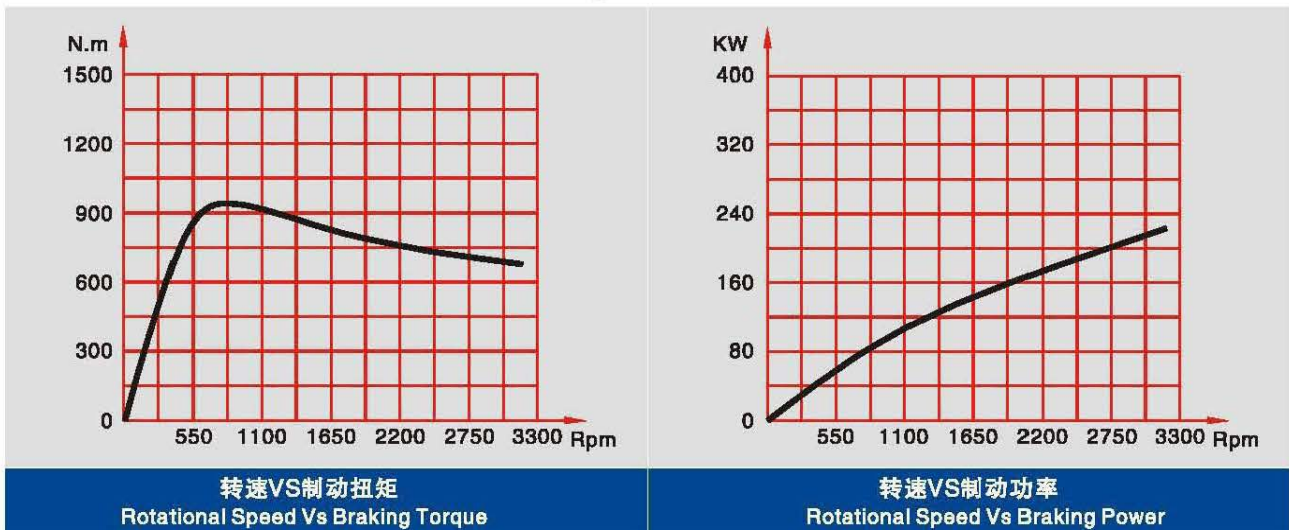


KAS09系列电涡流机尺寸规格 KAS09 series eddy current machine out and assembly dimensions

| 科奥号 Keao No. | 尺寸(mm) Dimensions | | | | | | | | | | | | |
|-----------------|-------------------|-----|-----|-----|----|----|-----|-----|------|------|----|----|-----|
| | A | B | C | D | E | F | G | H | K | L | M | N | P/Q |
| KAS09-00 | 610 | 60 | 413 | 137 | | 56 | Φ40 | Φ40 | 35 | | 12 | | Φ42 |
| KAS09A-00 | 635 | 126 | 383 | 126 | 66 | 66 | Φ45 | Φ45 | 39.5 | 39.5 | 14 | 14 | Φ50 |
| KAS09B-00 | 635 | 121 | 413 | 121 | 56 | 56 | Φ40 | Φ40 | 35 | 35 | 12 | 12 | Φ42 |

注意事项 attention:
 1、单边轴外伸部分不得长于395mm,轴总长不得大920mm。(Unilateral shaft extension dimensions less than 395mm, total length of the shaft less than 920mm.)
 2、单边轴外伸直径P、Q值不能大于Φ52mm。(Shaft extension diameter P/Q less than 52mm.)
 3、尺寸可根据顾客定制。(Dimensions can according to customer requirements.)

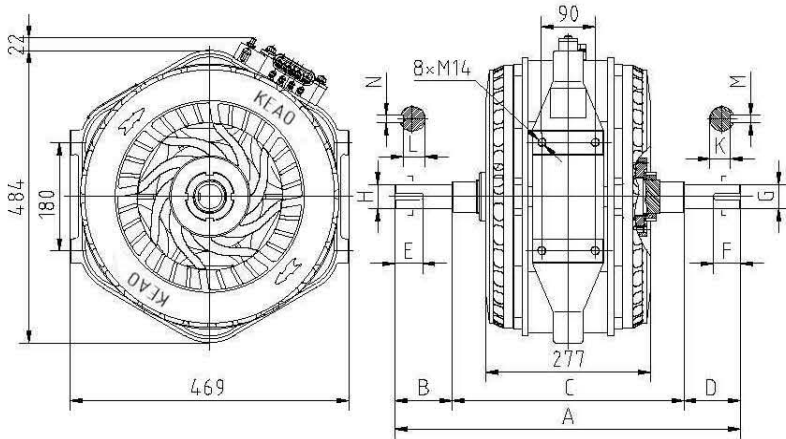
KAS09系列电涡流机曲线图/KAS09 series eddy current machine characteristics curves



KAS09系列电涡流机技术参数 KAS09 series eddy current machine technical parameter

| | |
|--------------------------------|------------------------|
| 最大扭矩 Max. transmissible torque | 900 N.m |
| 最大转速Max. rotational speed | 3200 r.p.m |
| 额定功率 Rated power | 140 KW |
| 额定电压 Rated voltage | DC 192V |
| 总电流 Total current | 14.5 A |
| 转子平衡等级Rotors balance grade | 6.3G |
| 转子转动惯量Rotors inertia | 1.64 Kg.m ² |
| 总重量 Total weight | 120Kg |

Picture And/Or Part Number of OEM's are for reference purpose only.



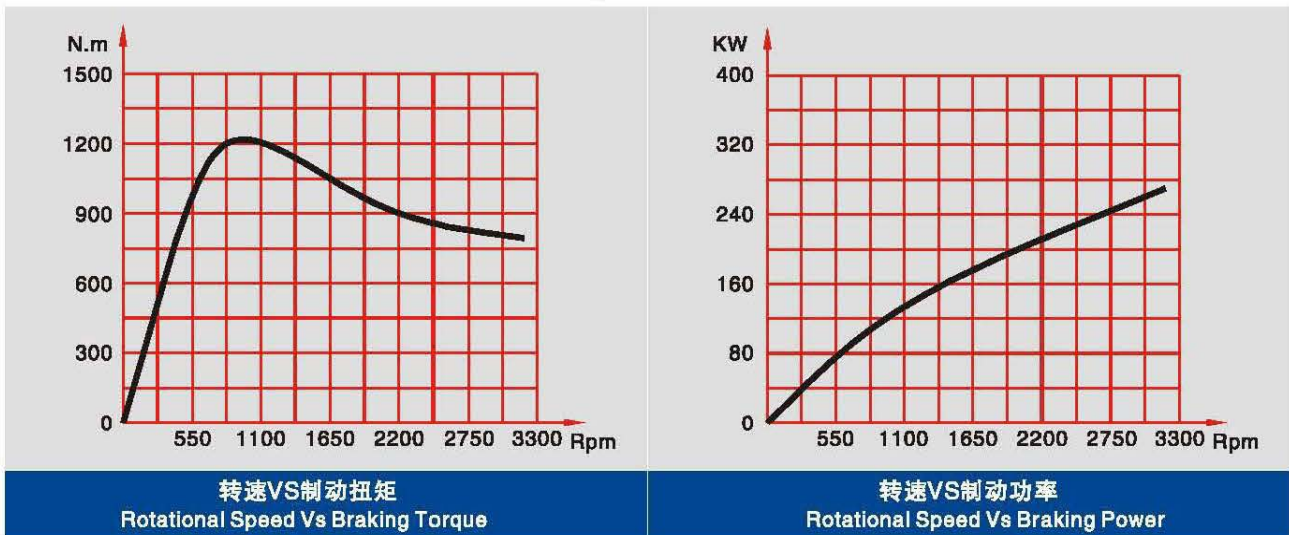
KAS12系列电涡流机尺寸规格 KAS12 series eddy current machine out and assembly dimensions

| 科奥号 Keao No. | 尺寸(mm) Dimensions | | | | | | | | | | | | |
|-----------------|-------------------|-----|-----|-----|----|----|-----|-----|------|------|----|----|-----|
| | A | B | C | D | E | F | G | H | K | L | M | N | P/Q |
| KAS12-00 | 610 | 60 | 413 | 137 | 56 | 56 | Φ40 | Φ40 | 35 | 35 | 12 | 12 | Φ42 |
| KAS12A-00 | 635 | 126 | 383 | 126 | 66 | 66 | Φ45 | Φ45 | 39.5 | 39.5 | 14 | 14 | Φ50 |
| KAS12B-00 | 655 | 121 | 413 | 121 | 56 | 56 | Φ40 | Φ40 | 35 | 35 | 12 | 12 | Φ42 |

注意事项 attention:

- 1、单边轴外伸部分不得长于380mm,轴总长不得大920mm。(Unilateral shaft extension dimensions less that395mm, total length of the shaft less than 920mm.)
- 2、单边轴外伸直径P、Q值不能大于Φ52mm。(Shaft extension diameter P/Q less that52mm.)
- 3、尺寸可根据顾客定制。(Dimensions can according to customer requirements.)

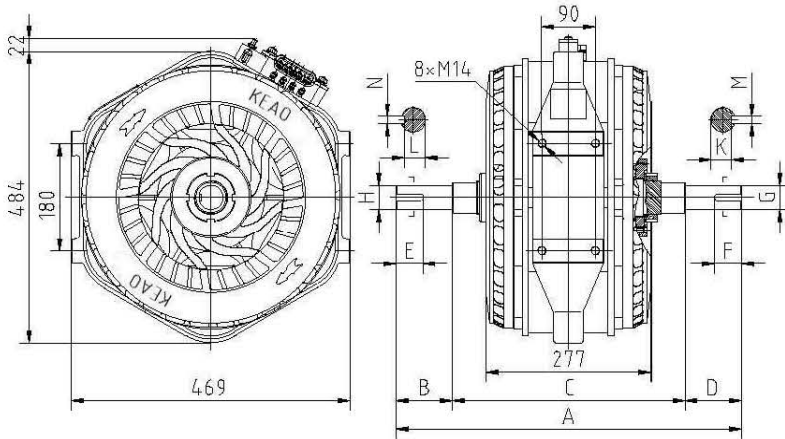
KAS12系列电涡流机曲线图/KAS12 series eddy current machine characteristics curves



KAS12系列电涡流机技术参数 KAS12 series eddy current machine technical parameter

| | |
|--------------------------------|------------------------|
| 最大扭矩 Max. transmissible torque | 1200 N.m |
| 最大转速Max. rotational speed | 3200 r.p.m |
| 额定功率 Rated power | 170 KW |
| 额定电压 Rated voltage | DC 192V |
| 总电流 Total current | 15.6 A |
| 转子平衡等级Rotors balance grade | 6.3G |
| 转子转动惯量Rotors inertia | 1.64 Kg.m ² |
| 总重量 Total weight | 130Kg |

Picture And/Or Part Number of OEM's are for reference purpose only.



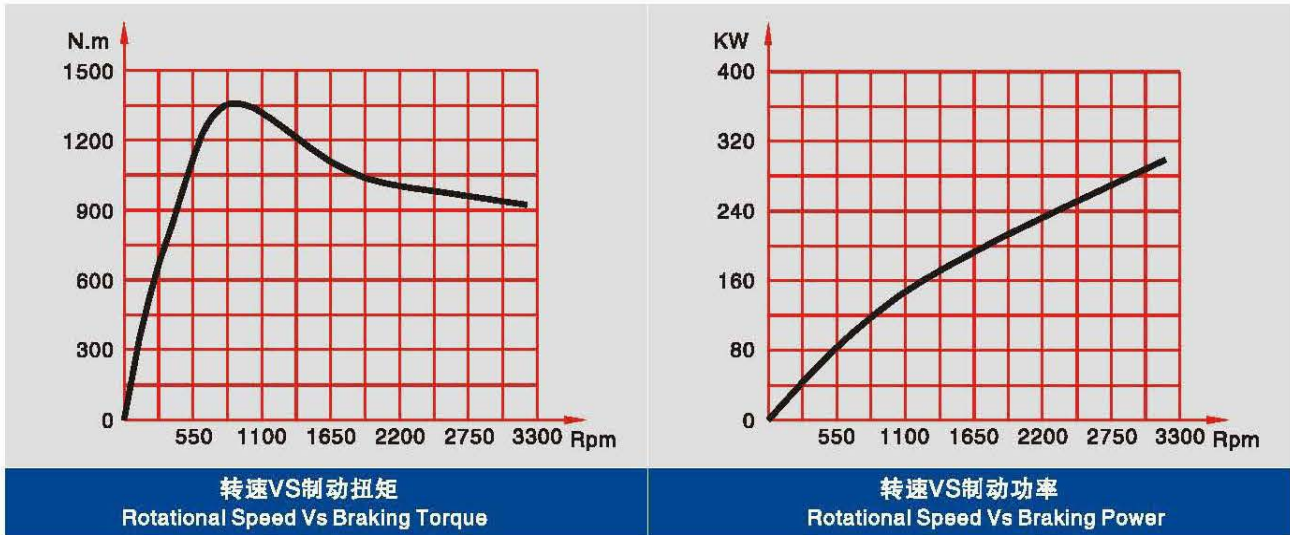
KAS14系列电涡流机尺寸规格 KAS14 series eddy current machine out and assembly dimensions

| 科奥号 Keao No. | 尺寸(mm) Dimensions | | | | | | | | | | | | |
|-----------------|-------------------|-----|-----|-----|----|----|-----|-----|------|------|----|----|-------|
| | A | B | C | D | E | F | G | H | K | L | M | N | P/Q |
| KAS14-00 | 550 | 60 | 430 | 60 | 60 | 60 | Φ40 | Φ40 | 35 | 35 | 12 | 12 | Φ50 |
| KAS14A-00 | 580 | 95 | 390 | 95 | 45 | 45 | Φ40 | Φ40 | 35 | 35 | 12 | 12 | Φ50 |
| KAS14B-00 | 600 | 60 | 480 | 60 | 60 | 60 | Φ40 | Φ40 | 35 | 35 | 12 | 12 | Φ45 |
| KAS14D-00 | 703 | 137 | 429 | 137 | 56 | 56 | Φ50 | Φ50 | 44.5 | 44.5 | 14 | 14 | Φ52.5 |

注意事项 attention:

- 1、单边轴外伸部分不得长于380mm,轴总长不得大920mm。(Unilateral shaft extension dimensions less than 380mm, total length of the shaft less than 920mm.)
- 2、单边轴外伸直径P、Q值不能大于φ52mm。(Shaft extension diameter P/Q less than 52mm.)
- 3、尺寸可根据顾客定制。(Dimensions can according to customer requirements.)

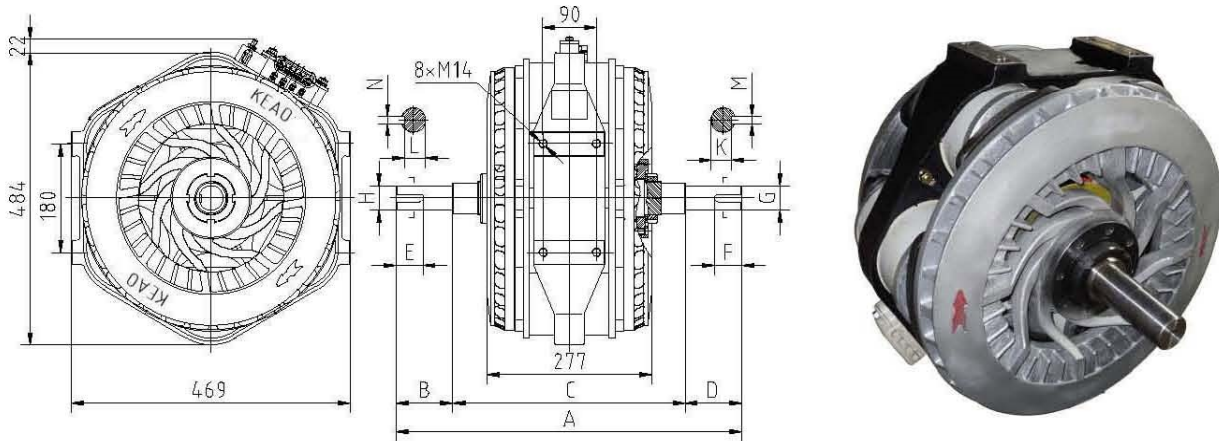
KAS14系列电涡流机曲线图/KAS14 series eddy current machine characteristics curves



KAS14系列电涡流机技术参数 KAS14 series eddy current machine technical parameter

| | |
|--------------------------------|------------------------|
| 最大扭矩 Max. transmissible torque | 1400 N.m |
| 最大转速Max. rotational speed | 3200 r.p.m |
| 额定功率 Rated power | 190 KW |
| 额定电压 Rated voltage | DC 192V |
| 总电流 Total current | 16.3 A |
| 转子平衡等级Rotors balance grade | 6.3G |
| 转子转动惯量Rotors inertia | 1.64 Kg.m ² |
| 总重量 Total weight | 140Kg |

Picture And/Or Part Number of OEM's are for reference purpose only.



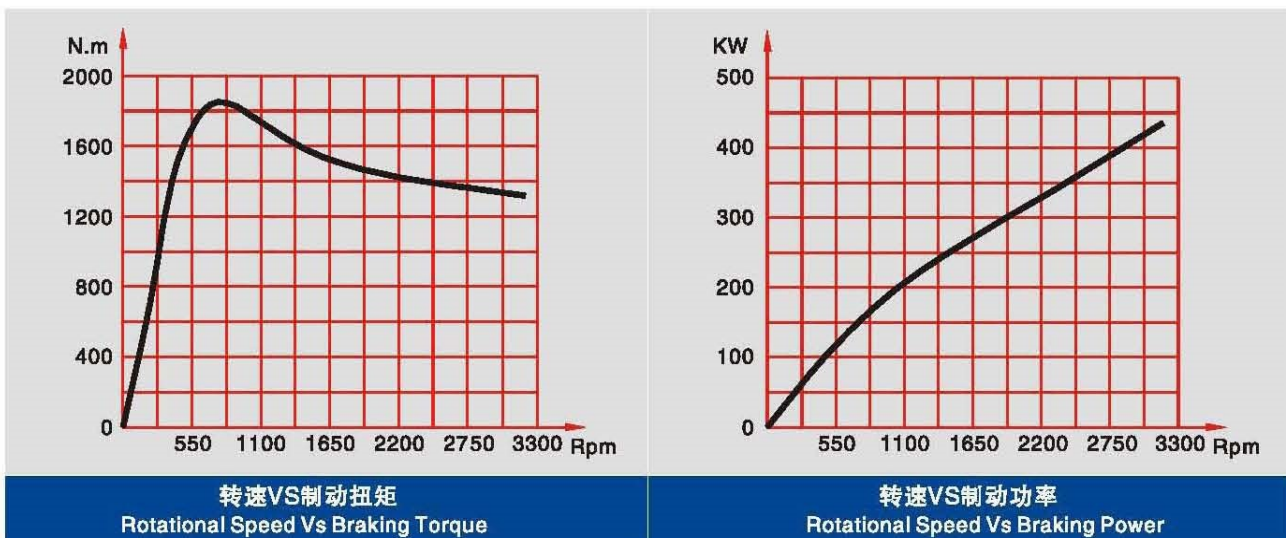
KAS16系列电涡流机尺寸规格 KAS16 series eddy current machine out and assembly dimensions

| 科奥号 Keao No. | 尺寸(mm) Dimensions | | | | | | | | | | | | |
|-----------------|-------------------|-----|-----|-----|----|----|-----|-----|----|----|----|----|-----|
| | A | B | C | D | E | F | G | H | K | L | M | N | P/Q |
| KAS16-00-R-L | 610 | 60 | 413 | 137 | | 56 | Φ40 | Φ40 | 35 | | 12 | | Φ42 |
| KAS16B-00 | 655 | 121 | 413 | 121 | 56 | 56 | Φ40 | Φ40 | 35 | 35 | 12 | 12 | Φ45 |
| KAS16D-00 | 620 | 150 | 320 | 150 | | | Φ50 | Φ45 | | | | | |

注意事项 attention:

- 1、单边轴外伸部分不得长于380mm,轴总长不得大920mm。(Unilateral shaft extension dimensions less than 395mm, total length of the shaft less than 920mm.)
- 2、单边轴外伸直径P、Q值不能大于φ52mm。(Shaft extension diameter P/Q less than 52mm.)
- 3、尺寸可根据顾客定制。(Dimensions can according to customer requirements.)

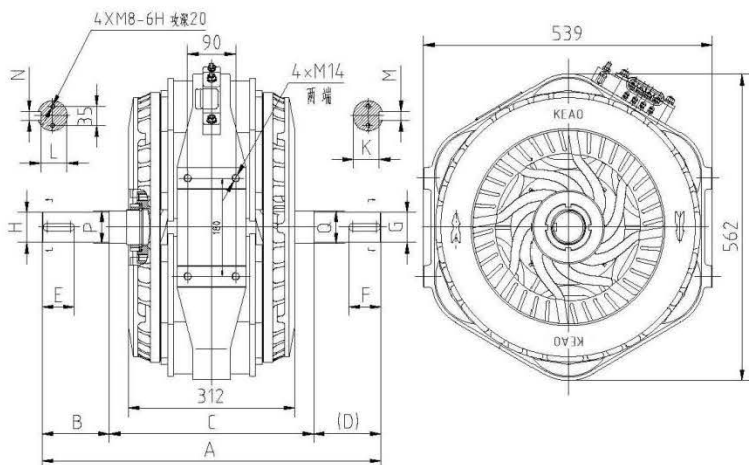
KAS16系列电涡流机曲线图/KAS16 series eddy current machine characteristics curves



KAS16系列电涡流机技术参数 KAS16 series eddy current machine technical parameter

| | |
|--------------------------------|------------------------|
| 最大扭矩 Max. transmissible torque | 1600 N.m |
| 最大转速Max. rotational speed | 3200 r.p.m |
| 额定功率 Rated power | 230 KW |
| 额定电压 Rated voltage | DC 192V |
| 总电流 Total current | 21.3 A |
| 转子平衡等级Rotors balance grade | 6.3G |
| 转子转动惯量Rotors inertia | 1.64 Kg.m ² |
| 总重量 Total weight | 200Kg |

Picture And/Or Part Number of OEM's are for reference purpose only.



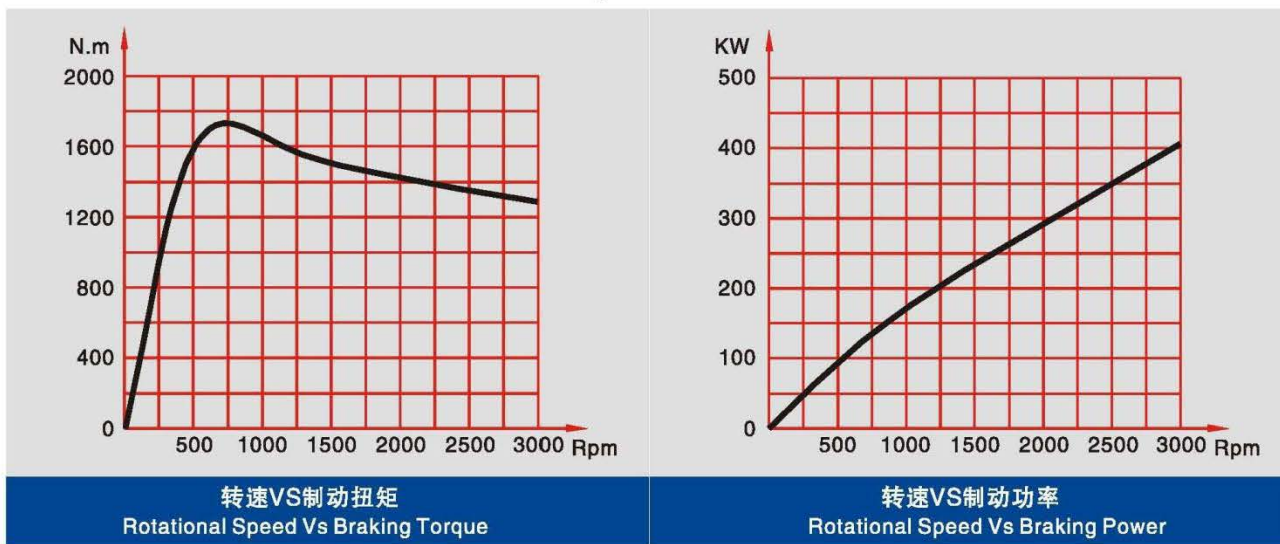
KAS17系列电涡流机尺寸规格 KAS17 series eddy current machine out and assembly dimensions

| 科奥号 Keao No. | 尺寸(mm) Dimensions | | | | | | | | | | | | |
|-----------------|-------------------|----|-----|----|----|----|-----|-----|----|----|----|----|-----|
| | A | B | C | D | E | F | G | H | K | L | M | N | P/Q |
| KAS17-00 | 572 | 62 | 448 | 62 | 62 | 62 | Φ40 | Φ40 | 35 | 35 | 12 | 12 | Φ50 |

注意事项 attention:

- 1、单边轴外伸部分不得长于365mm,轴总长不得大920mm。(Unilateral shaft extension dimensions less than 365mm, total length of the shaft less than 920mm.)
- 2、单边轴外伸直径P、Q值不能大于φ62mm。(Shaft extension diameter P/Q less than φ62mm.)
- 3、尺寸可根据顾客定制。(Dimensions can according to customer requirements.)

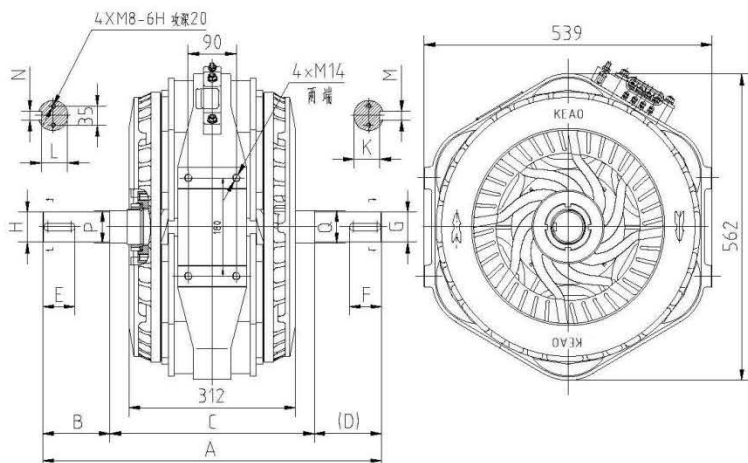
KAS17系列电涡流机曲线图/KAS17 series eddy current machine characteristics curves



KAS17系列电涡流机技术参数 KAS17 series eddy current machine technical parameter

| | |
|--------------------------------|------------------------|
| 最大扭矩 Max. transmissible torque | 1700 N.m |
| 最大转速Max. rotational speed | 3000 r.p.m |
| 额定功率 Rated power | 200 KW |
| 额定电压 Rated voltage | DC 192V |
| 总电流 Total current | 16.8 A |
| 转子平衡等级Rotors balance grade | 6.3G |
| 转子转动惯量Rotors inertia | 2.33 Kg.m ² |
| 总重量 Total weight | 210Kg |

Picture And/Or Part Number of OEM's are for reference purpose only.

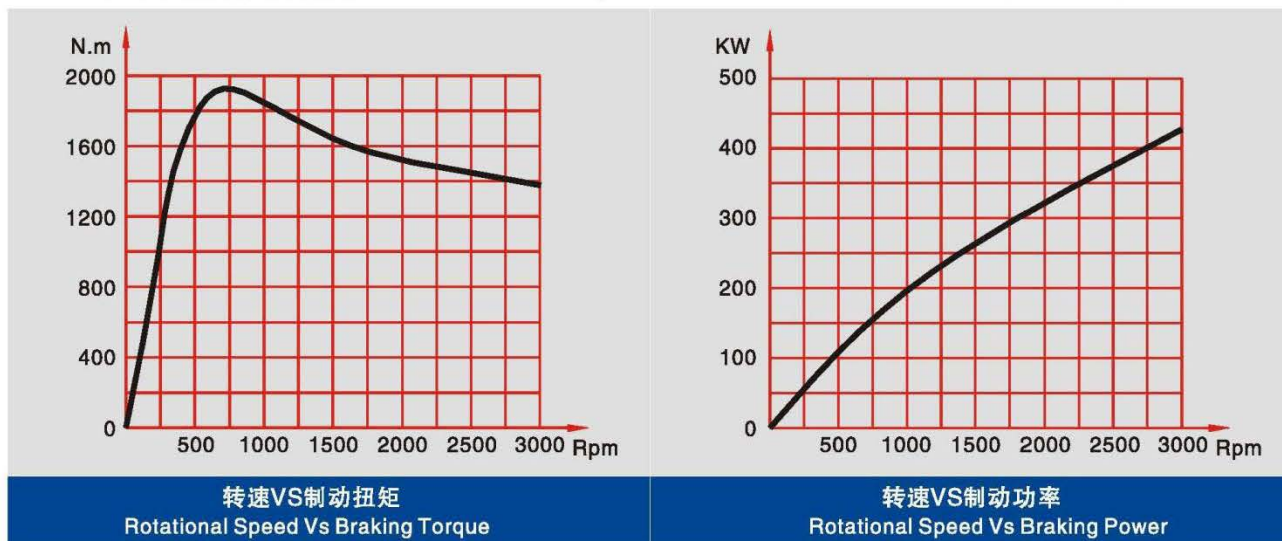


KAS19系列电涡流机尺寸规格 KAS19 series eddy current machine out and assembly dimensions

| 科奥号 Keao No. | 尺寸(mm) Dimensions | | | | | | | | | | | | |
|-----------------|-------------------|-----|-----|-----|----|----|-----|-----|------|------|----|----|-----|
| | A | B | C | D | E | F | G | H | K | L | M | N | P/Q |
| KAS19-00 | 572 | 62 | 448 | 62 | 62 | 62 | Φ40 | Φ40 | 35 | 35 | 12 | 12 | Φ50 |
| KAS19C-00 | 620 | 55 | 429 | 136 | | 45 | Φ50 | Φ50 | 44.5 | 44.5 | 14 | 14 | Φ55 |
| KAS19D-00 | 610 | 137 | 413 | 60 | 56 | | Φ40 | Φ40 | | | 35 | | Φ50 |
| KAS19G-00 | 756 | 116 | 460 | 180 | | 78 | Φ50 | Φ50 | 44.5 | | 14 | | Φ60 |

注意事项 attention:
 1、单边轴外伸部分不得长于365mm,轴总长不得大920mm。(Unilateral shaft extension dimensions less that365mm, total length of the shaft less than 920mm.)
 2、单边轴外伸直径P、Q值不能大于Φ62mm。(Shaft extension diameter P/Q less that62mm.)
 3、尺寸可根据顾客定制。(Dimensions can according to customer requirements.)

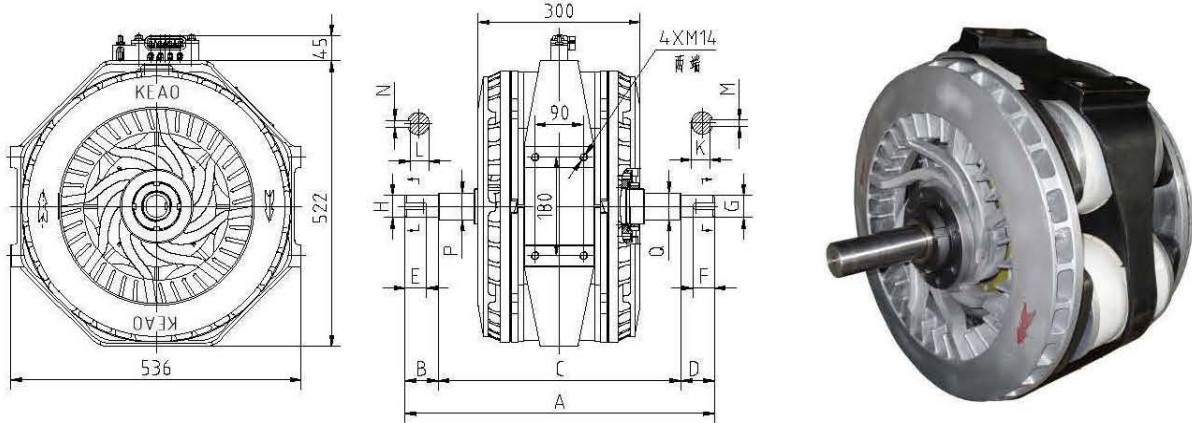
KAS19系列电涡流机曲线图/KAS19 series eddy current machine characteristics curves



KAS19系列电涡流机技术参数 KAS19 series eddy current machine technical parameter

| | |
|--------------------------------|------------------------|
| 最大扭矩 Max. transmissible torque | 1900 N.m |
| 最大转速Max. rotational speed | 3000 r.p.m |
| 额定功率 Rated power | 245 KW |
| 额定电压 Rated voltage | DC 192V |
| 总电流 Total current | 22.6 A |
| 转子平衡等级Rotors balance grade | 6.3G |
| 转子转动惯量Rotors inertia | 2.33 Kg.m ² |
| 总重量 Total weight | 220Kg |

Picture And/Or Part Number of OEM's are for reference purpose only.



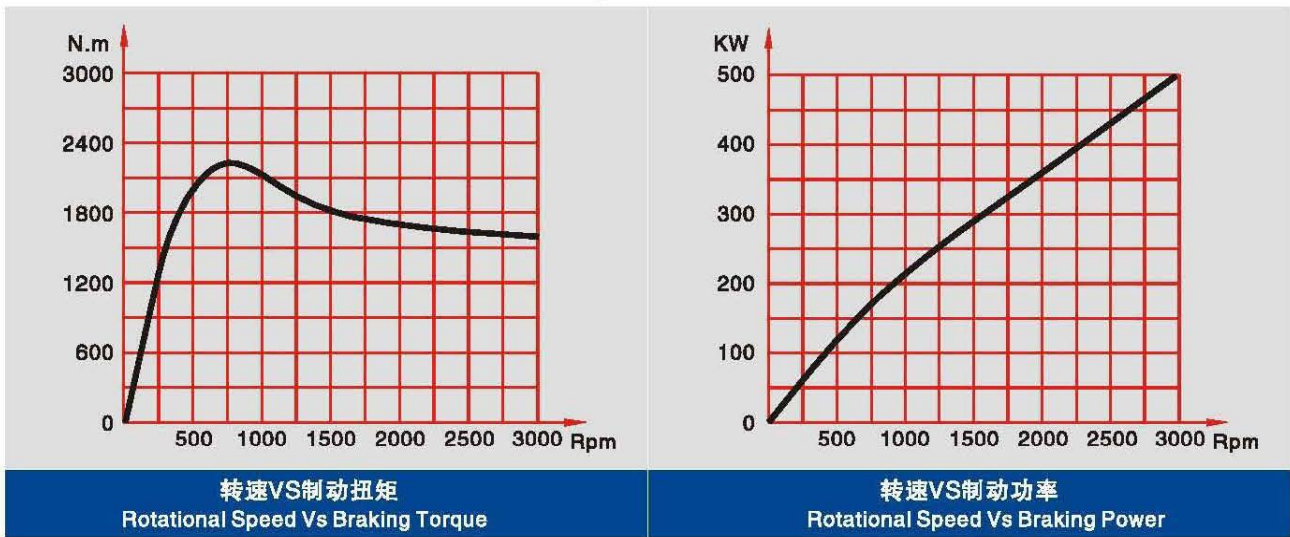
KAS22系列电涡流机尺寸规格 KAS22 series eddy current machine out and assembly dimensions

| 科奥号 Keao No. | 尺寸(mm) Dimensions | | | | | | | | | | | | |
|-----------------|-------------------|-----|-----|-----|----|----|-----|-----|----|----|----|----|-----|
| | A | B | C | D | E | F | G | H | K | L | M | N | P/Q |
| KAS22-00 | 572 | 62 | 448 | 62 | 40 | 40 | Φ40 | Φ40 | 35 | 35 | 12 | 12 | Φ50 |
| KAS22A-00 | 703 | 137 | 429 | 137 | 66 | 66 | Φ40 | Φ40 | 35 | 35 | 12 | 12 | Φ50 |

注意事项 attention:

- 1、单边轴外伸部分不得长于370mm,轴总长不得大920mm。(Unilateral shaft extension dimensions less that 370mm, total length of the shaft less than 920mm.)
- 2、单边轴外伸直径P、Q值不能大于φ62mm。(Shaft extension diameter P/Q less that 62mm.)
- 3、尺寸可根据顾客定制。(Dimensions can according to customer requirements.)

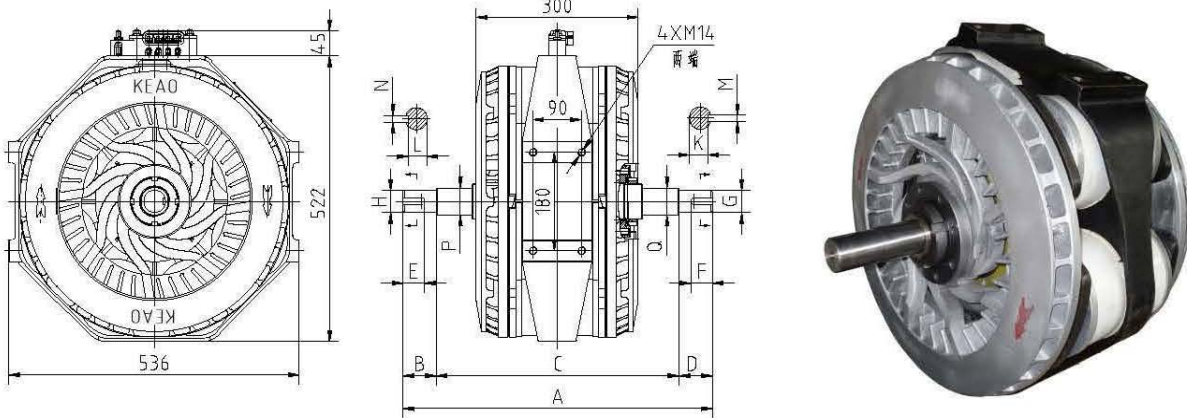
KAS22系列电涡流机曲线图/KAS22 series eddy current machine characteristics curves



KAS22系列电涡流机技术参数 KAS22 series eddy current machine technical parameter

| | |
|--------------------------------|------------------------|
| 最大扭矩 Max. transmissible torque | 2200 N.m |
| 最大转速Max. rotational speed | 3000 r.p.m |
| 额定功率 Rated power | 270 KW |
| 额定电压 Rated voltage | DC 192V |
| 总电流 Total current | 17.5 A |
| 转子平衡等级Rotors balance grade | 6.3G |
| 转子转动惯量Rotors inertia | 2.33 Kg.m ² |
| 总重量 Total weight | 230Kg |

Picture And/Or Part Number of OEM's are for reference purpose only.



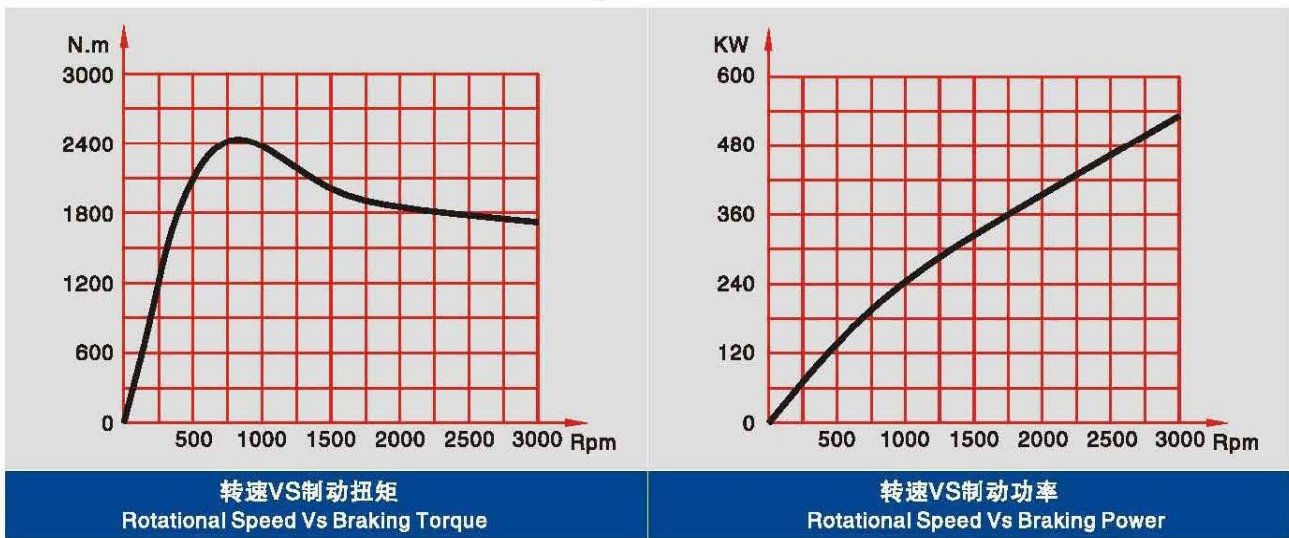
KAS24系列电涡流机尺寸规格 KAS24 series eddy current machine out and assembly dimensions

| 科奥号 Keao No. | 尺寸(mm) Dimensions | | | | | | | | | | | | |
|-----------------|-------------------|-----|-----|-----|----|----|-----|-----|----|----|----|----|-----|
| | A | B | C | D | E | F | G | H | K | L | M | N | P/Q |
| KAS24-00 | 572 | 62 | 448 | 62 | 40 | 40 | Φ40 | Φ40 | 35 | 35 | 12 | 12 | Φ50 |
| KAS24A-00 | 703 | 137 | 429 | 137 | 66 | 66 | Φ40 | Φ40 | 35 | 35 | 12 | 12 | Φ50 |

注意事项 attention:

- 1、单边轴外伸部分不得长于370mm,轴总长不得大920mm。(Unilateral shaft extension dimensions less that 370mm, total length of the shaft less than 920mm.)
- 2、单边轴外伸直径P、Q值不能大于Φ62mm。(Shaft extension diameter P/Q less that 62mm.)
- 3、尺寸可根据顾客定制。(Dimensions can according to customer requirements.)

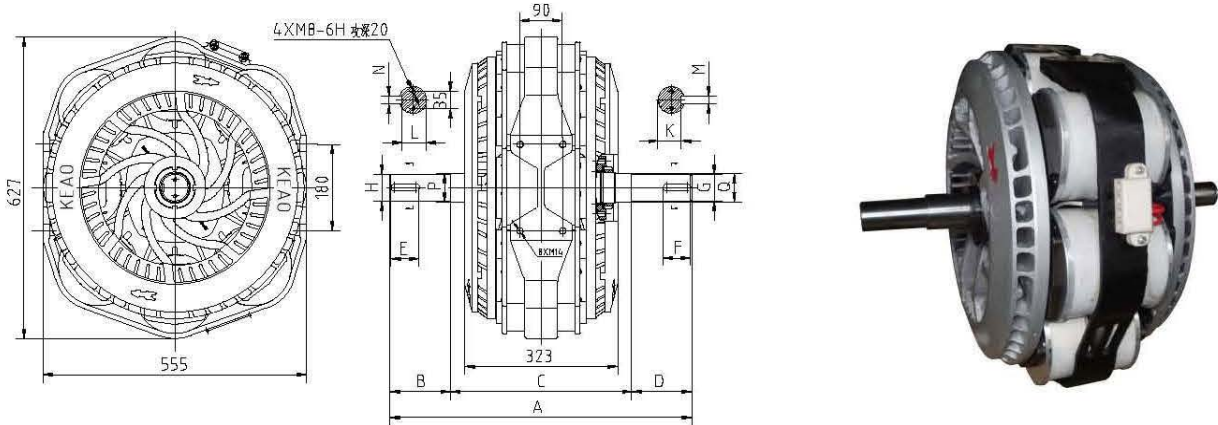
KAS24系列电涡流机曲线图/KAS24 series eddy current machine characteristics curves



KAS24系列电涡流机技术参数 KAS24 series eddy current machine technical parameter

| | |
|--------------------------------|------------------------|
| 最大扭矩 Max. transmissible torque | 2400 N.m |
| 最大转速Max. rotational speed | 3000 r.p.m |
| 额定功率 Rated power | 290 KW |
| 额定电压 Rated voltage | DC 192V |
| 总电流 Total current | 18.1 A |
| 转子平衡等级Rotors balance grade | 6.3G |
| 转子转动惯量Rotors inertia | 2.33 Kg.m ² |
| 总重量 Total weight | 240Kg |

Picture And/Or Part Number of OEM's are for reference purpose only.



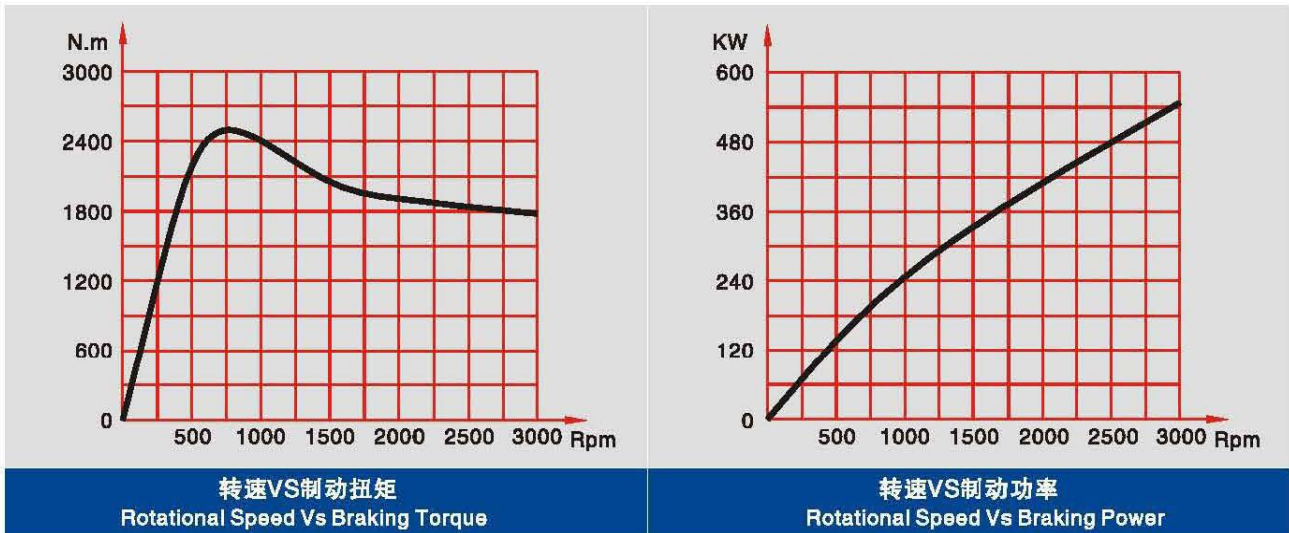
KAS25系列电涡流机尺寸规格 KAS25 series eddy current machine out and assembly dimensions

| 科奥号 Keao No. | 尺寸(mm) Dimensions | | | | | | | | | | | | |
|-----------------|-------------------|-----|-----|-----|----|----|-----|-----|------|------|----|----|-----|
| | A | B | C | D | E | F | G | H | K | L | M | N | P/Q |
| KAS25-00 | 595 | 62 | 471 | 62 | 62 | 62 | Φ55 | Φ55 | 49 | 49 | 16 | 16 | Φ60 |
| KAS25A-00 | 635 | 126 | 383 | 126 | 58 | 58 | Φ55 | Φ55 | 49 | 49 | 16 | 16 | Φ60 |
| KAS25B-00 | 722 | 137 | 448 | 137 | 56 | 56 | Φ50 | Φ50 | 44.5 | 44.5 | 14 | 14 | Φ60 |
| KAS25C-00 | 700 | 110 | 453 | 137 | | 56 | Φ50 | Φ50 | 44.5 | | 14 | | Φ60 |

注意事项 attention:

- 1、单边轴外伸部分不得长于360mm,轴总长不得大920mm。(Unilateral shaft extension dimensions less that360mm, total length of the shaft less than 920mm.)
- 2、单边轴外伸直径P、Q值不能大于φ62mm。(Shaft extension diameter P/Q less that62mm.)
- 3、尺寸可根据顾客定制。(Dimensions can according to customer requirements.)

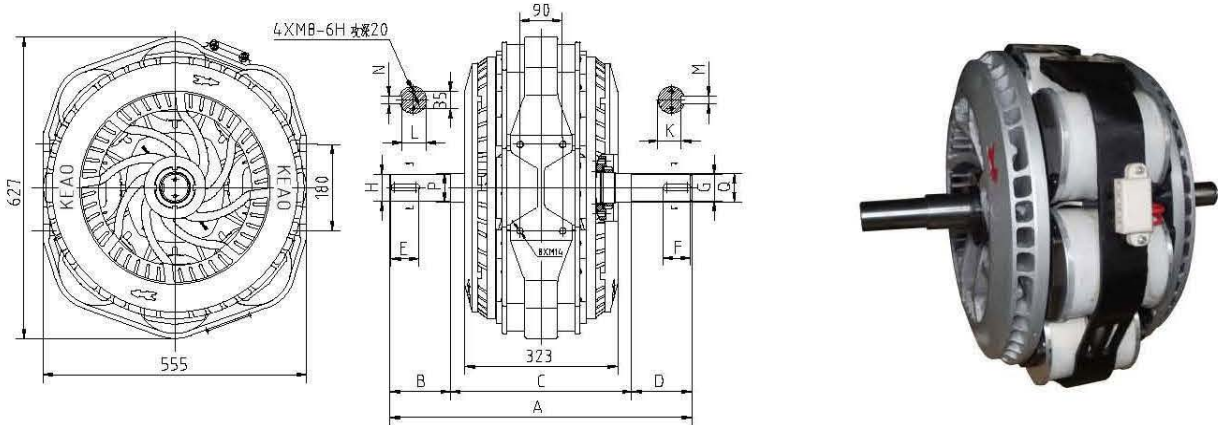
KAS25系列电涡流机曲线图/KAS25 series eddy current machine characteristics curves



KAS25系列电涡流机技术参数 KAS25 series eddy current machine technical parameter

| | |
|--------------------------------|-----------------------|
| 最大扭矩 Max. transmissible torque | 2500 N.m |
| 最大转速Max. rotational speed | 3000 r.p.m |
| 额定功率 Rated power | 310 KW |
| 额定电压 Rated voltage | DC 192V |
| 总电流 Total current | 16.8 A |
| 转子平衡等级Rotors balance grade | 6.3G |
| 转子转动惯量Rotors inertia | 3.1 Kg.m ² |
| 总重量 Total weight | 280Kg |

Picture And/Or Part Number of OEM's are for reference purpose only.

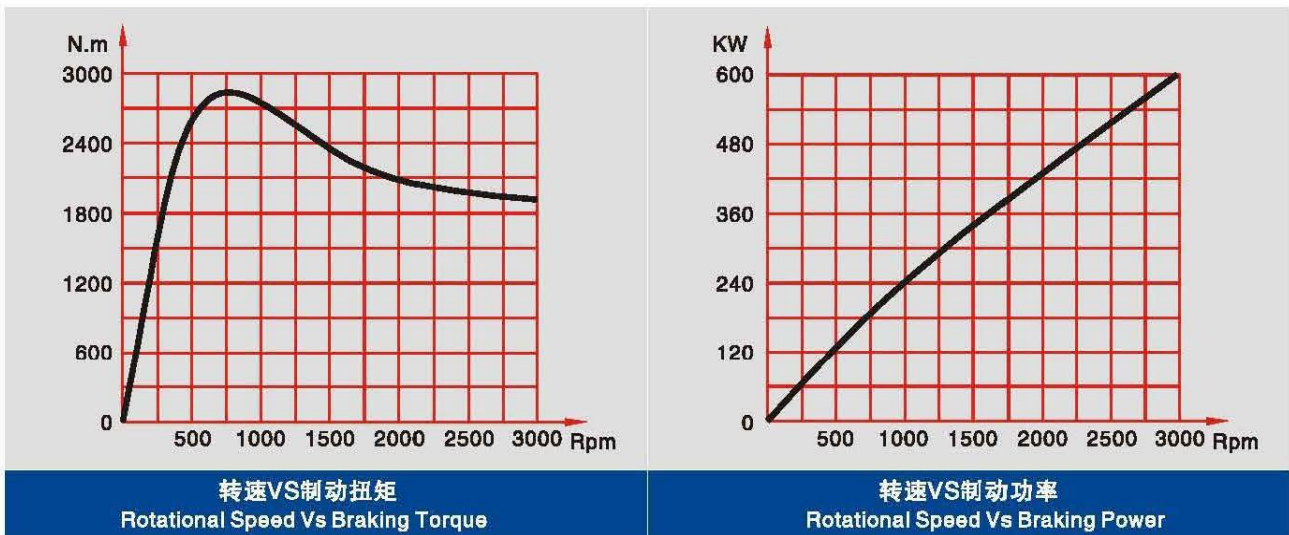


KAS28系列电涡流机尺寸规格 KAS28 series eddy current machine out and assembly dimensions

| 科奥号 Keao No. | 尺寸(mm) Dimensions | | | | | | | | | | | | |
|-----------------|-------------------|-----|-----|-----|----|----|-----|-----|------|------|----|----|-----|
| | A | B | C | D | E | F | G | H | K | L | M | N | P/Q |
| KAS28-00 | 595 | 62 | 471 | 62 | 62 | 62 | Φ55 | Φ55 | 49 | 49 | 16 | 16 | Φ60 |
| KAS28A-00 | 635 | 126 | 383 | 126 | 58 | 58 | Φ55 | Φ55 | 49 | 49 | 16 | 16 | Φ60 |
| KAS28B-00 | 722 | 137 | 448 | 137 | 56 | 56 | Φ50 | Φ50 | 44.5 | 44.5 | 14 | 14 | Φ60 |
| KAS28C-00 | 700 | 110 | 453 | 137 | | 56 | Φ50 | Φ50 | 44.5 | | 14 | | Φ60 |

注意事项 attention:
 1、单边轴外伸部分不得长于360mm,轴总长不得大920mm。(Unilateral shaft extension dimensions less that360mm, total length of the shaft less than 920mm.)
 2、单边轴外伸直径P、Q值不能大于φ62mm。(Shaft extension diameter P/Q less that62mm.)
 3、尺寸可根据顾客定制。(Dimensions can according to customer requirements.)

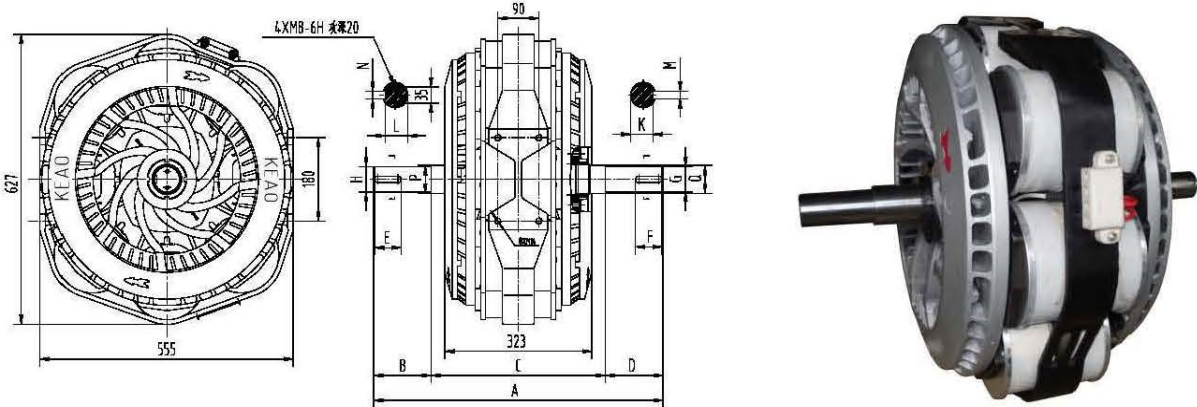
KAS28系列电涡流机曲线图/KAS28 series eddy current machine characteristics curves



KAS28系列电涡流机技术参数 KAS28 series eddy current machine technical parameter

| | |
|--------------------------------|-----------------------|
| 最大扭矩 Max. transmissible torque | 2800 N.m |
| 最大转速Max. rotational speed | 3000 r.p.m |
| 额定功率 Rated power | 350 KW |
| 额定电压 Rated voltage | DC 192V |
| 总电流 Total current | 20.6 A |
| 转子平衡等级Rotors balance grade | 6.3G |
| 转子转动惯量Rotors inertia | 3.1 Kg.m ² |
| 总重量 Total weight | 290Kg |

Picture And/Or Part Number of OEM's are for reference purpose only.

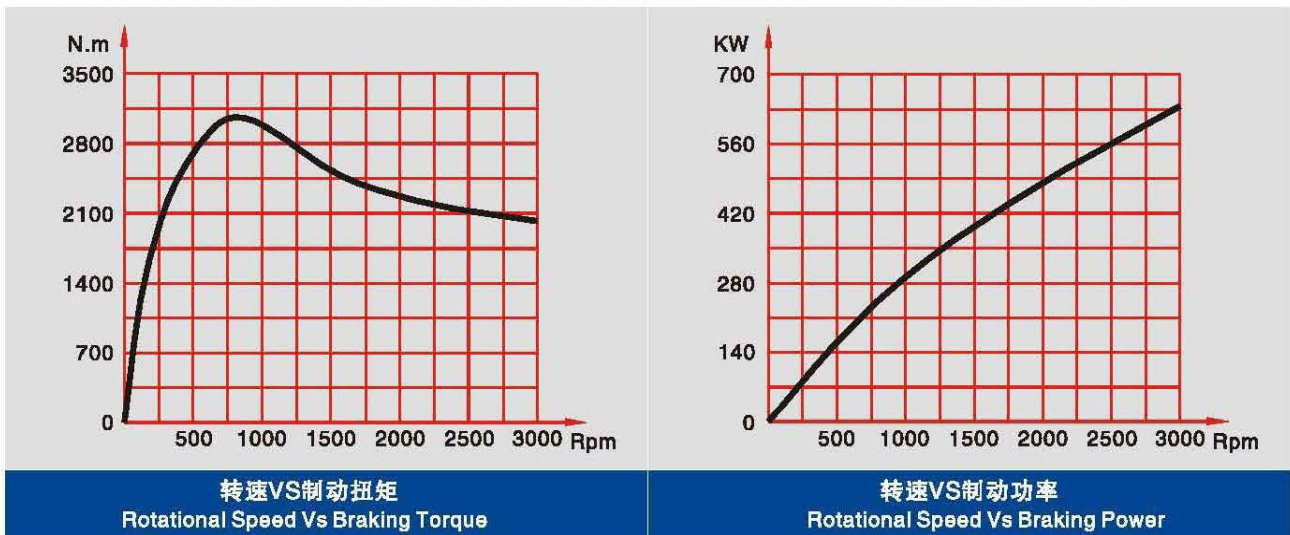


KAS30系列电涡流机尺寸规格 KAS30 series eddy current machine out and assembly dimensions

| 科奥号 Keao No. | 尺寸(mm) Dimensions | | | | | | | | | | | | |
|-----------------|-------------------|-----|-----|-----|----|----|-----|-----|------|------|----|----|-----|
| | A | B | C | D | E | F | G | H | K | L | M | N | P/Q |
| KAS30-00 | 595 | 62 | 471 | 62 | 62 | 62 | Φ55 | Φ55 | 49 | 49 | 16 | 16 | Φ60 |
| KAS30A-00 | 635 | 126 | 383 | 126 | 58 | 58 | Φ55 | Φ55 | 49 | 49 | 16 | 16 | Φ60 |
| KAS30B-00 | 722 | 137 | 448 | 137 | 56 | 56 | Φ50 | Φ50 | 44.5 | 44.5 | 14 | 14 | Φ60 |
| KAS30C-00 | 700 | 110 | 453 | 137 | | 56 | Φ50 | Φ50 | 44.5 | | 14 | | Φ60 |

注意事项 attention:
 1、单边轴外伸部分不得长于360mm,轴总长不得大920mm。(Unilateral shaft extension dimensions less than 360mm, total length of the shaft less than 920mm.)
 2、单边轴外伸直径P、Q值不能大于φ62mm。(Shaft extension diameter P/Q less than φ62mm.)
 3、尺寸可根据顾客定制。(Dimensions can according to customer requirements.)

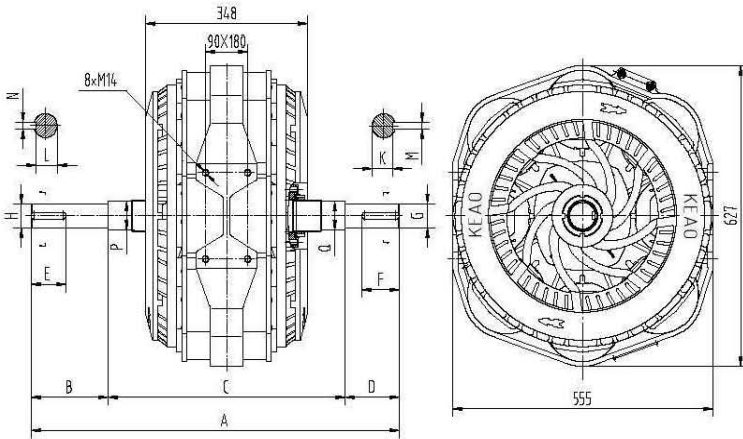
KAS30系列电涡流机曲线图/KAS30 series eddy current machine characteristics curves



KAS30系列电涡流机技术参数 KAS30 series eddy current machine technical parameter

| | |
|--------------------------------|-----------------------|
| 最大扭矩 Max. transmissible torque | 3000 N.m |
| 最大转速Max. rotational speed | 3000 r.p.m |
| 额定功率 Rated power | 385 KW |
| 额定电压 Rated voltage | DC 192V |
| 总电流 Total current | 20 A |
| 转子平衡等级Rotors balance grade | 6.3G |
| 转子转动惯量Rotors inertia | 3.1 Kg.m ² |
| 总重量 Total weight | 300Kg |

Picture And/Or Part Number of OEM's are for reference purpose only.

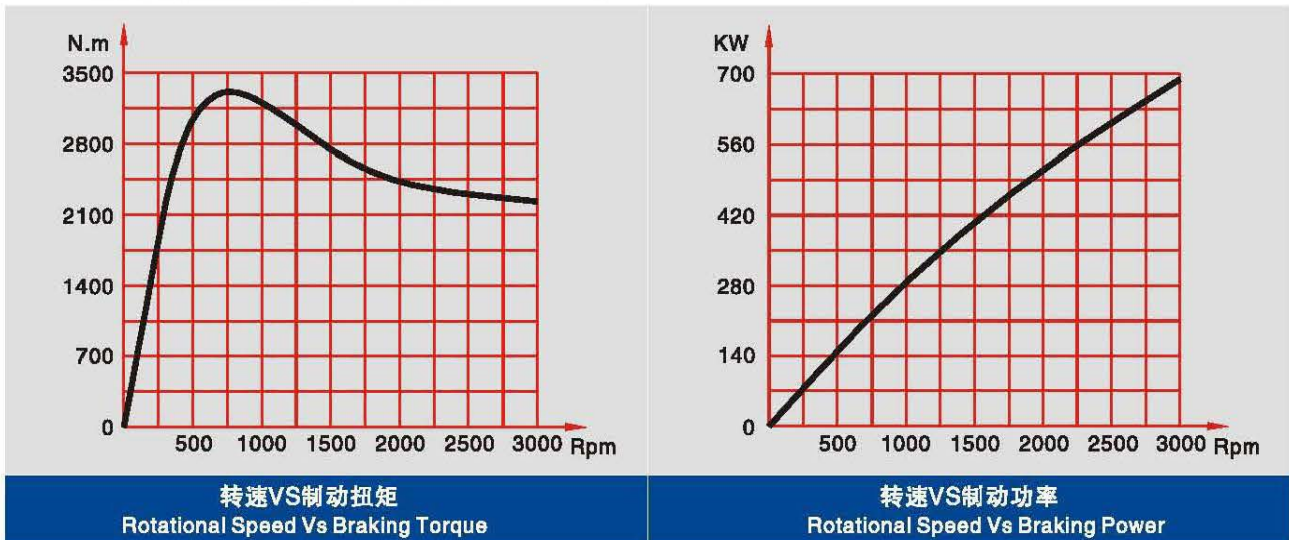


KAS33系列电涡流机尺寸规格 KAS33 series eddy current machine out and assembly dimensions

| 科奥号 Keao No. | 尺寸(mm) Dimensions | | | | | | | | | | | | |
|-----------------|-------------------|-------|-------|-------|----|----|-----|-----|------|------|----|----|-----|
| | A | B | C | D | E | F | G | H | K | L | M | N | P/Q |
| KAS33-00 | 785 | 162.3 | 507.4 | 115.3 | 75 | 80 | Φ50 | Φ50 | 44.5 | 44.5 | 14 | 14 | Φ60 |
| KAS33A-00 | 605 | 45 | 515 | 45 | 45 | 45 | Φ50 | Φ50 | 44.5 | 44.5 | 14 | 14 | Φ60 |
| KAS33-00-R-L | 720 | 70 | 513 | 137 | | 56 | Φ50 | Φ50 | 44.5 | | 14 | | Φ60 |
| KAS3303-00 | 730 | 74 | 582 | 74 | 56 | 56 | Φ55 | Φ55 | 49 | 49 | 16 | 16 | Φ60 |

注意事项 attention:
 1、单边轴外伸部分不得长于350mm,轴总长不得大920mm。(Unilateral shaft extension dimensions less than 350mm, total length of the shaft less than 920mm.)
 2、单边轴外伸直径P、Q值不能大于Φ62mm。(Shaft extension diameter P/Q less than Φ62mm.)
 3、尺寸可根据顾客定制。(Dimensions can according to customer requirements.)

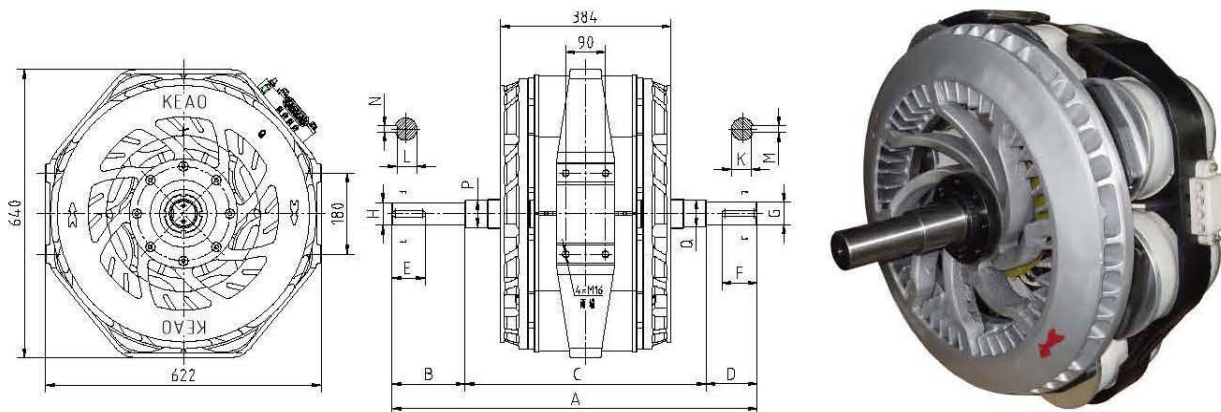
KAS33系列电涡流机曲线图/KAS33 series eddy current machine characteristics curves



KAS33系列电涡流机技术参数 KAS33 series eddy current machine technical parameter

| | |
|--------------------------------|-----------------------|
| 最大扭矩 Max. transmissible torque | 3300 N.m |
| 最大转速Max. rotational speed | 3000 r.p.m |
| 额定功率 Rated power | 450 KW |
| 额定电压 Rated voltage | DC 192V |
| 总电流 Total current | 22.3 A |
| 转子平衡等级Rotors balance grade | 6.3G |
| 转子转动惯量Rotors inertia | 3.1 Kg.m ² |
| 总重量 Total weight | 320Kg |

Picture And/Or Part Number of OEM's are for reference purpose only.

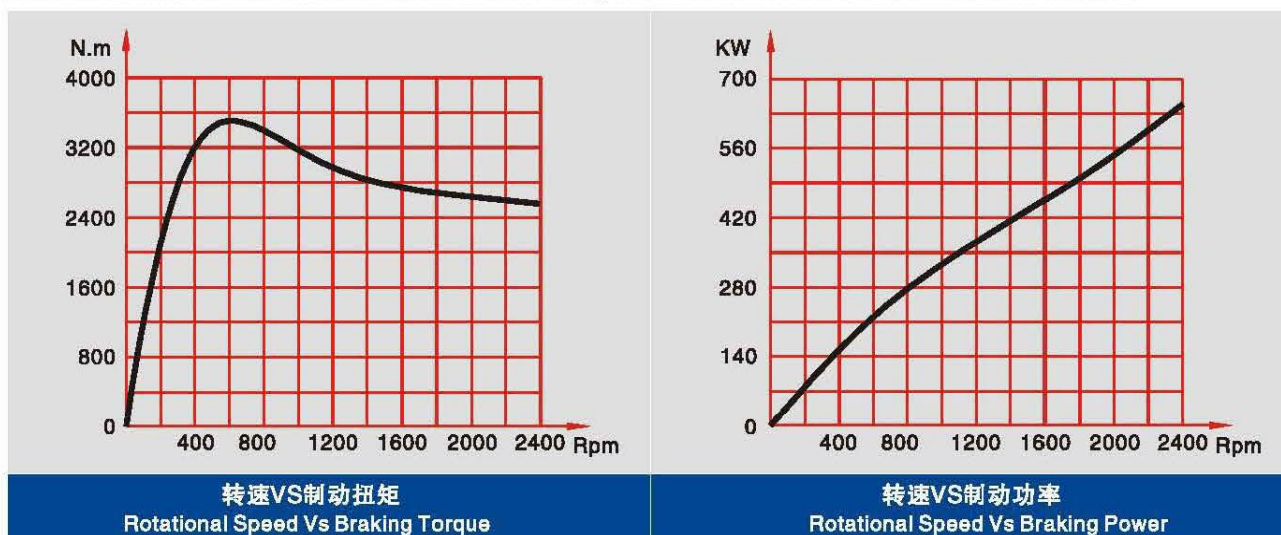


KAS35系列电涡流机尺寸规格 KAS35 series eddy current machine out and assembly dimensions

| 科奥号 Keao No. | 尺寸(mm) Dimensions | | | | | | | | | | | | |
|-----------------|-------------------|-------|-------|-------|----|----|-----|-----|------|------|----|----|-----|
| | A | B | C | D | E | F | G | H | K | L | M | N | P/Q |
| KAS35-00 | 785 | 162.3 | 507.4 | 115.3 | 75 | 80 | Φ50 | Φ50 | 44.5 | 44.5 | 14 | 14 | Φ60 |
| KAS35A-00 | 605 | 45 | 515 | 45 | 45 | 45 | Φ50 | Φ50 | 44.5 | 44.5 | 14 | 14 | Φ60 |
| KAS35-00-R-L | 720 | 70 | 513 | 137 | | 56 | Φ50 | Φ50 | 44.5 | | 14 | | Φ60 |
| KAS3503-00 | 730 | 74 | 582 | 74 | 56 | 56 | Φ55 | Φ55 | 49 | 49 | 16 | 16 | Φ60 |

注意事项 attention:
 1、单边轴外伸部分不得长于350mm,轴总长不得大920mm。(Unilateral shaft extension dimensions less than 350mm, total length of the shaft less than 920mm.)
 2、单边轴外伸直径P、Q值不能大于Φ62mm。(Shaft extension diameter P/Q less than 62mm.)
 3、尺寸可根据顾客定制。(Dimensions can according to customer requirements.)

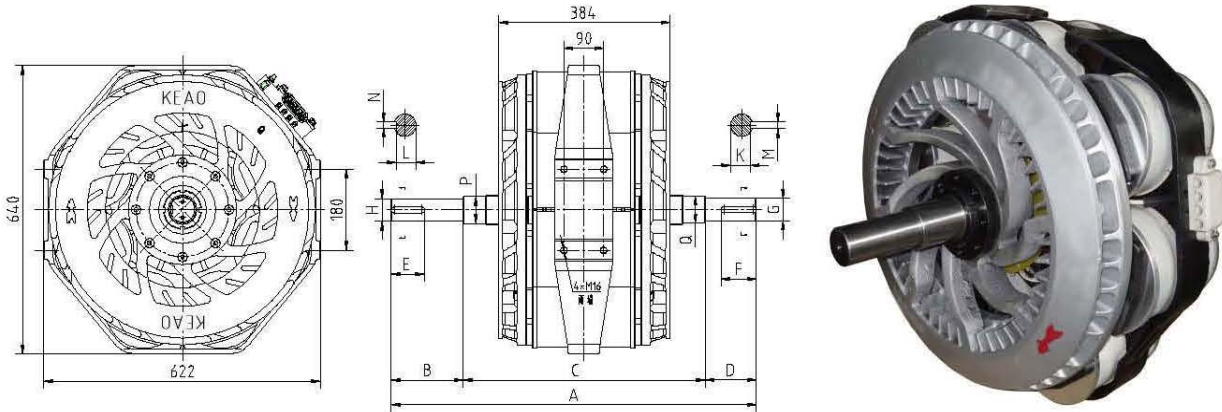
KAS35系列电涡流机曲线图/KAS35 series eddy current machine characteristics curves



KAS35系列电涡流机技术参数 KAS35 series eddy current machine technical parameter

| | |
|--------------------------------|-----------------------|
| 最大扭矩 Max. transmissible torque | 3500 N.m |
| 最大转速 Max. rotational speed | 2400 r.p.m |
| 额定功率 Rated power | 500 KW |
| 额定电压 Rated voltage | DC 192V |
| 总电流 Total current | 22.6 A |
| 转子平衡等级 Rotors balance grade | 6.3G |
| 转子转动惯量 Rotors inertia | 3.1 Kg.m ² |
| 总重量 Total weight | 410Kg |

Picture And/Or Part Number of OEM's are for reference purpose only.

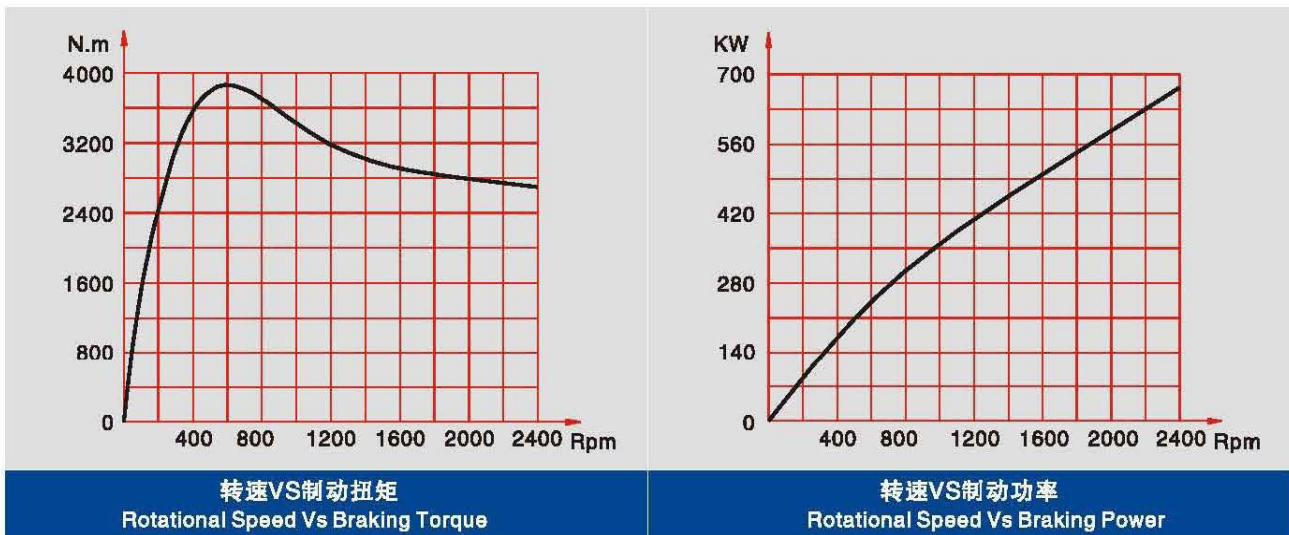


KAS38系列电涡流机尺寸规格 KAS38 series eddy current machine out and assembly dimensions

| 科奥号 Keao No. | 尺寸(mm) Dimensions | | | | | | | | | | | | |
|-----------------|-------------------|-------|-------|-------|----|----|-----|-----|------|------|----|----|-----|
| | A | B | C | D | E | F | G | H | K | L | M | N | P/Q |
| KAS38-00 | 785 | 162.3 | 507.4 | 115.3 | 75 | 80 | Φ50 | Φ50 | 44.5 | 44.5 | 14 | 14 | Φ60 |
| KAS38A-00 | 605 | 45 | 515 | 45 | 45 | 45 | Φ50 | Φ50 | 44.5 | 44.5 | 14 | 14 | Φ60 |
| KAS38-00-R-L | 720 | 70 | 513 | 137 | | 56 | Φ50 | Φ50 | 44.5 | | 14 | | Φ60 |
| KAS3803-00 | 730 | 74 | 582 | 74 | 56 | 56 | Φ55 | Φ55 | 49 | 49 | 16 | 16 | Φ60 |

注意事项 attention:
 1、单边轴外伸部分不得长于330mm,轴总长不得大920mm。(Unilateral shaft extension dimensions less than 330mm, total length of the shaft less than 920mm.)
 2、单边轴外伸直径P、Q值不能大于φ62mm。(Shaft extension diameter P/Q less than φ62mm.)
 3、尺寸可根据顾客定制。(Dimensions can according to customer requirements.)

KAS38系列电涡流机曲线图/KAS38 series eddy current machine characteristics curves



KAS38系列电涡流机技术参数 KAS38 series eddy current machine technical parameter

| | |
|--------------------------------|-----------------------|
| 最大扭矩 Max. transmissible torque | 3800 N.m |
| 最大转速Max. rotational speed | 2400 r.p.m |
| 额定功率 Rated power | 540 KW |
| 额定电压 Rated voltage | DC 192V |
| 总电流 Total current | 23.5 A |
| 转子平衡等级Rotors balance grade | 6.3G |
| 转子转动惯量Rotors inertia | 3.6 Kg.m ² |
| 总重量 Total weight | 420Kg |

Picture And/Or Part Number of OEM's are for reference purpose only.



广州科奥缓速器有限公司

GUANGZHOU KEAO RETARDER CO., LTD

地址：中国广东省广州市番禺区南村镇永大集团平安路1号

邮编：511442

电话：+86 20 2813 5977 +86 138 2214 9994

传真：+86 20 6191 3388

网址：www.gzkeao.com

邮箱：keao@gzkeao.com